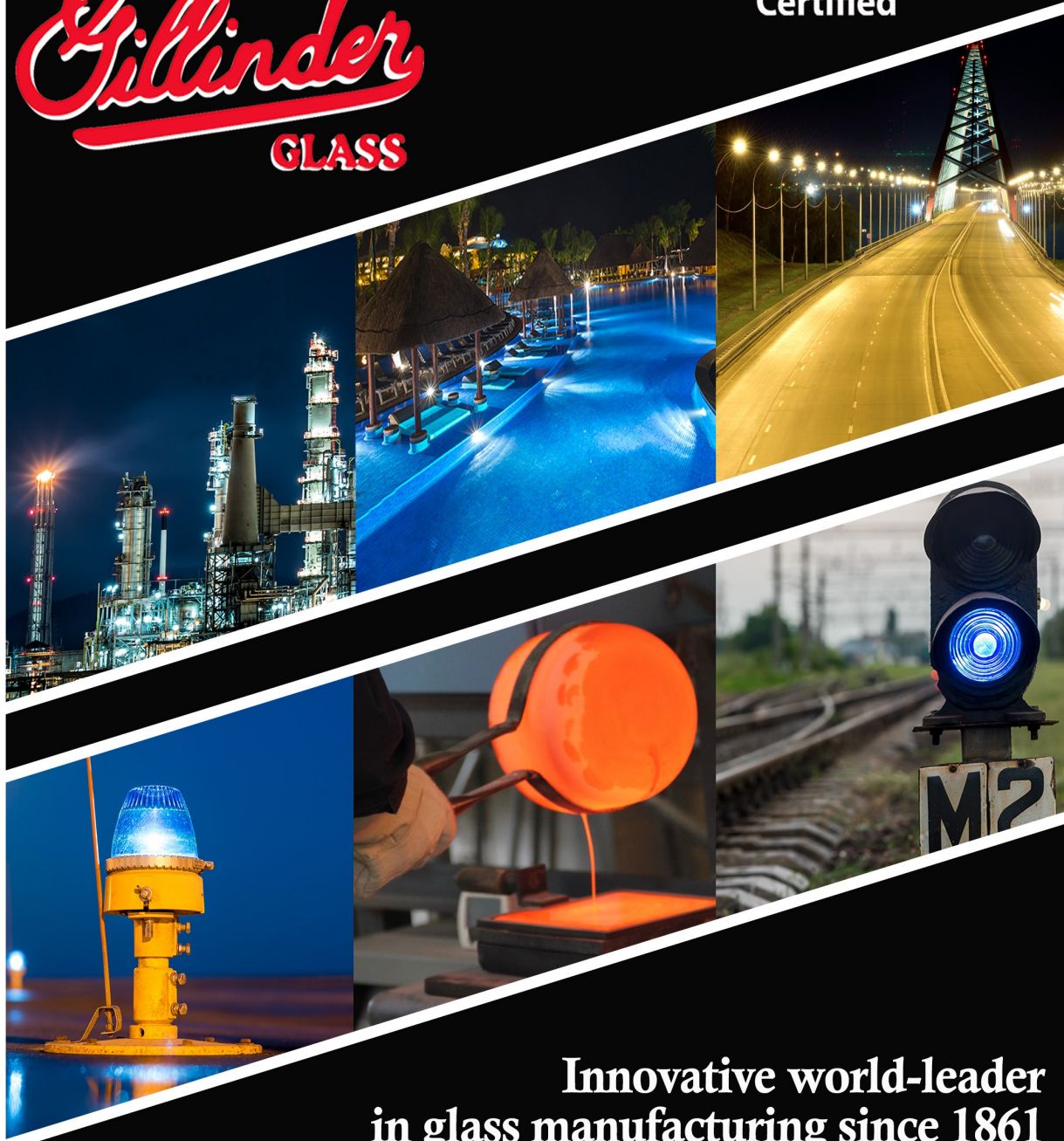


# *Gillinder* GLASS

ISO 9001:2015  
Certified



**Innovative world-leader  
in glass manufacturing since 1861**



## **GILLINDER GLASS**

Gillinder's custom molded glass can be made to custom specifications. Having been in the glass manufacturing business for over 160 years, Gillinder Glass is an undisputed expert in the industry. Chemists and engineers work closely with customers to develop and design glass products to the exact specifications required.

Gillinder remains a world leader in the glass manufacturing industry. The high quality of our products and the excellence of our customer service give Gillinder the reputation of being one of the absolute best glass manufacturing companies in the nation.

### **Research & Development/ Mold Creation**

Gillinder maintains a fully equipped in-house mold and design shop. Customers benefit from the creation and our ongoing care of their molds. Gillinder offers in-house expertise to assist customers in designing superior quality parts produced in the most economical fashion, providing excellent value and a competitive advantage.

## Quality– ISO 9001: 2015 Certified

The Gillinder family of employees are committed to meeting our customers' expectations in regards to the quality of our products, the timeliness of delivery, and with every service we provide.

### Types of Glass

- Clear Borosilicate
- Clear Soda Lime
- Long Pass
- Band Pass
- Clear UV
- UV Absorbing, Visible Transmitting
- UV Transmitting, Visible Absorbing
- FAA and ICAO Colors



### Finishing Options

- Sandblaster
- Cutting Saws
- DCM Rotary Table and Lapmaster Grinders
- Up Shock & Down Shock Equipment to test thermal shock resistance
- Finishing ovens to fine tune color and harden coatings

### Tempering

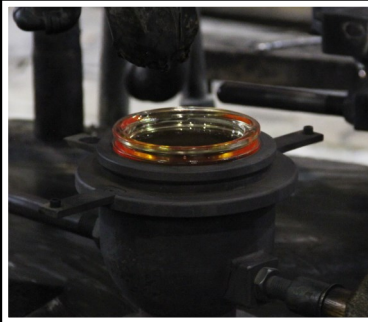
Tempering is a heat strengthening process for added durability. Samples are examined using a polariscope and depending on application may undergo thermal shock or impact testing.





## INDUSTRIAL

Gillinder Glass supplies the Industrial marketplace with a broad variety of glass products manufactured to the most rigid specifications to meet the demands of the industrial work environment.

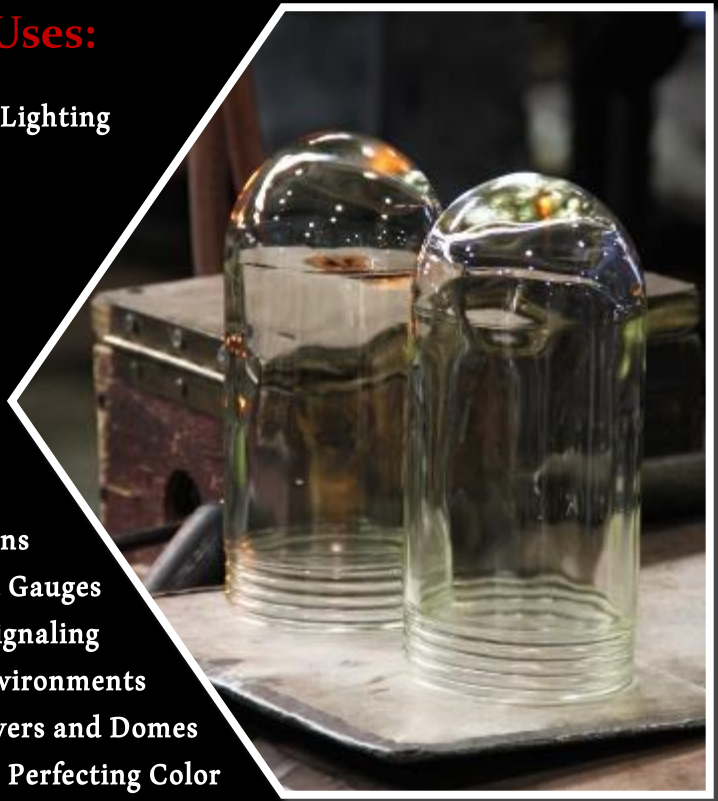


Many glass components are available as open molds for purchase. We also produce proprietary items to meet specific customer requirements.



## Common Industrial Uses:

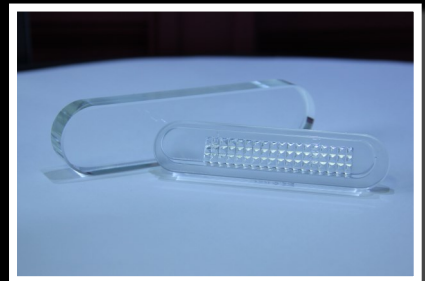
- Manufacturing & Warehouse Lighting
- Hazard & Warning Lighting
- Bridge & Tunnel Lighting
- Power Station Lighting
- Mining & Refinery Lighting
- Signal & Security Lighting
- Vaporproof Products
- Covers for Utility Meters
- Covers for Indicator Lights
- Covers for Hazardous Locations
- Industrial Sight Glass & Sight Gauges
- Glass for Marine & Railway Signaling
- Tempered Glass for Harsh Environments
- Explosion Resistant Glass Covers and Domes
- Multiple Heat Treatments for Perfecting Color



## Proprietary Techniques:

Gillinder employs a number of proprietary techniques to create DOD, UL 844, and UL 595 compliant industrial grade fixtures using:

- Tempering for increased thermal shock resistance
- Procedures adherence to tight tolerances
- Treatments for increased strength
- Increased impact resistance
- Heat treatments to perfect color
- Prisms for controlled light distribution
- Finishing operations for masks & skid resistance





## AIRFIELD

Gillinder is the world leader in providing precision molded and fabricated glass innovation to the airfield lighting industry, carrying the largest array of open mold and custom/proprietary products for meeting military, FAA and ICAO specifications.

We have developed a complete line of airfield glass lenses, runway glass lights, prisms and other products. Our products are used with white or colored LEDs to meet EB67D and we continue to work with new light sources to provide the most innovative solutions to the builders of tomorrow's airfield infrastructure.

Gillinder products are designed to meet physical durability standards including abrasion resistance, UV protection, thermal shock resistance and impact resistance. Our open stock features hundreds of products including glass lenses, lights, domes, globes, and irregular shaped light covers. You can order from our open stock catalog or get custom engineered lenses.



## Common Airfield Uses:

- Helipad Lighting
- Inset Prisms & Optics
- Obstruction/Tower Lighting
- Dichroic & Absorption Filters
- High Intensity Runway Lights (HIRL)
- General Aviation Low Intensity Lights
- Medium Intensity Runway/Taxiway Lights
- Precision Approach Path Indicator (PAPI)
- LED-compatible Colored Filters and Covers

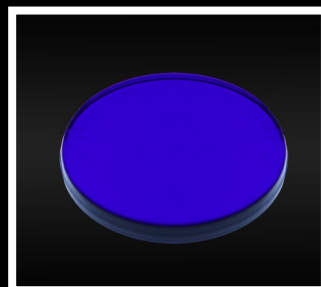


Gillinder products are designed to meet physical durability standards including abrasion resistance, UV protection, thermal shock resistance and impact resistance. Our open stock features hundreds of products including glass lenses, lights, domes, globes, and irregular shaped light covers. You can order from our open stock catalog or get custom engineered lenses.

## NVIS GLASS

Our optical engineers, are prepared to meet even the most difficult challenges. Standard blank forms are 6.5" square with a 6.0" square of guaranteed usable area. Thicknesses start at .275" (7mm).

- NVIS Friendly compositions
- NVIS Green A (Intruder)
- NVIS Green A
- NVIS Green B
- NVIS Yellow B
- IR Transmitting
- Secure Blue-Green







## AEROSPACE

Gillinder Glass provides a major engineering resource to commercial, military, and private aircraft manufacturers, distributors and lighting fixture OEMs in North America and Europe.

Gillinder's engineering team has developed a proprietary "thin wall lens." Developed principally for military projects for improved flight performance, the process is now being marketed to the entire aerospace industry where weight reduction can be a key ingredient to success. Gillinder specially formulated soda compositions can achieve 20% to 50% thinner wall thickness (as thin as 1 mm) while maintaining mechanical and thermal integrity.

Gillinder Glass supplies a broad spectrum of products and extensive capabilities for the general and commercial aircraft of today and tomorrow as well as special products for the United States military and defense industry.



# LANDSCAPE

Gillinder Glass provides products for all aspects of Landscape Illumination, whether commercial, residential, or architectural. We manufacture products that are purely aesthetic or that provide enhanced safety or security.

Products are used in indoor and outdoor fixtures and made from borosilicate or soda- lime glass. Depending on the application secondary processing such as sandblasting can be applied to mask or diffuse light and create non- skid surfaces for in-ground lighting.



## Common Landscape Uses:

- Accent Lighting
- Walkway Lighting
- Spot & Flood Lighting
- Parking Area Lighting
- Glass Domes, Lenses, & Covers
- Restoration and Antique Lighting

# MARINE

Aquatic products include flat, convex and fresnel lenses, and barrel fresnels.



## Common Aquatic Uses:

- Oil Rig Lighting
- Spa Lighting
- Pool Lighting
- Sauna Lighting
- Bollard Lighting
- Fountain Lighting
- Flood & Backwash Lighting



## COMMERCIAL

Gillinder Glass provides solutions for specified commercial projects requiring distinctive illumination & transmission for light output. Commercial industries served include retail, office space, medical facilities, government buildings, and transportation sectors for parking, street, and highway lighting. Our onsite lab can test and provide optical analysis for any glass project.

### Common Commercial / Architectural Uses:

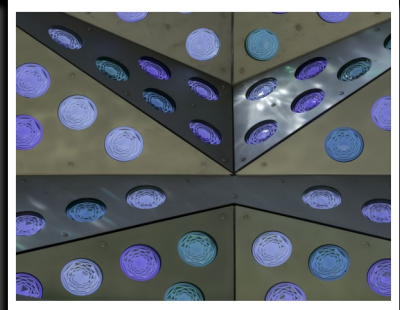
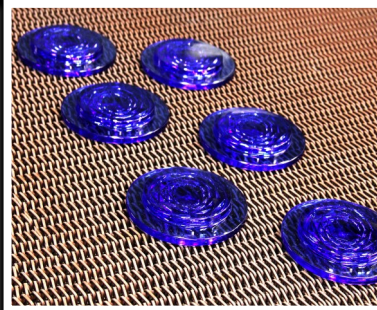
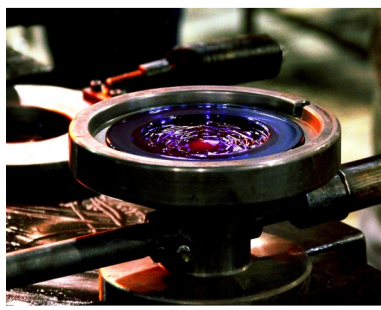
- Hallways
- Stairways
- Entryways
- Street Lighting
- Parking Structures
- Decorative External Lighting
- Incandescent Diffusion Optics
- Decorative Colored Components





# ARCHITECTURE

Gillinder assists architects & designers in showcasing their unique projects by offering superior glass solutions. Regardless of the light source, glass is unsurpassed in beauty, durability, and functionality. Gillinder shapes and styles most frequently included in architectural plans include: PAR lenses, plano convex lenses, decorative trims, fresnels, concave lenses, flat covers, prismatic pattern lenses, and a variety of standard or customer colorations.



Photos courtesy of Josiah McElheny Studio and Michael Weil

# SPECIALTY

Gillinder Glass has generations of experience providing solutions for your specialty project. Application and product portfolio offered by Gillinder are extensive with new designs always in development to meet specifications for precise light management.

Allow Gillinder Glass to be *YOUR* specialist.





Gottlieb Mutzer, employed the first day at the Maria Street factory of William T. Gillinder in 1860.

## GILLINDER GLASS

In the 1860's, William Gillinder established his name sake company and opened a glass factory in Philadelphia, Pennsylvania.

Sixty years later, Gillinder Brothers Glass was formed, and opened a factory in the small town of Port Jervis, New York. In the century to follow, Gillinder has led the glass industry in innovation and excellence.



**Gillinder**  
**GLASS**

(845) 856-5375

51 Erie Street,

Port Jervis, NY 12771

[GillinderGlass.com](http://GillinderGlass.com)